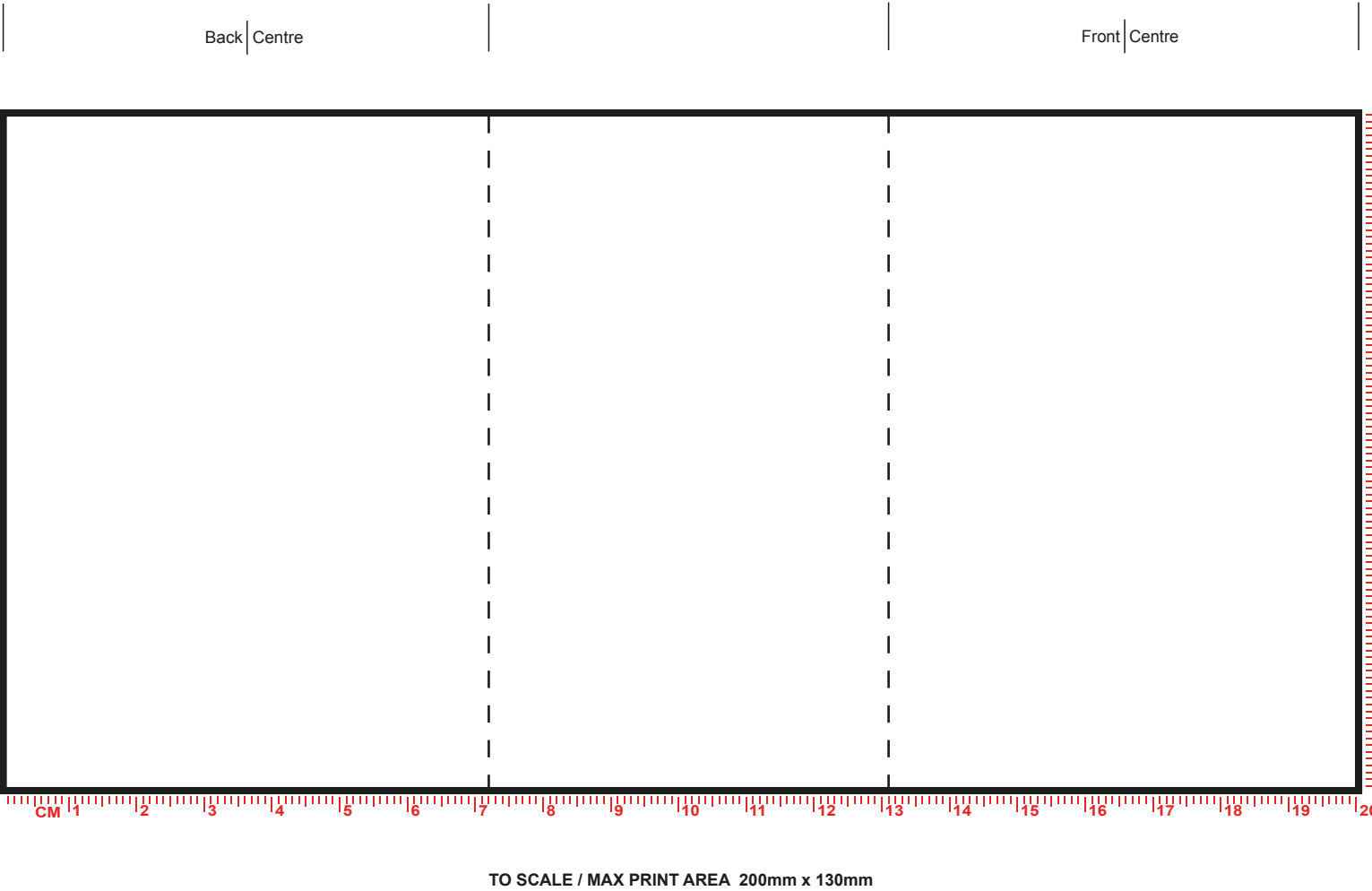


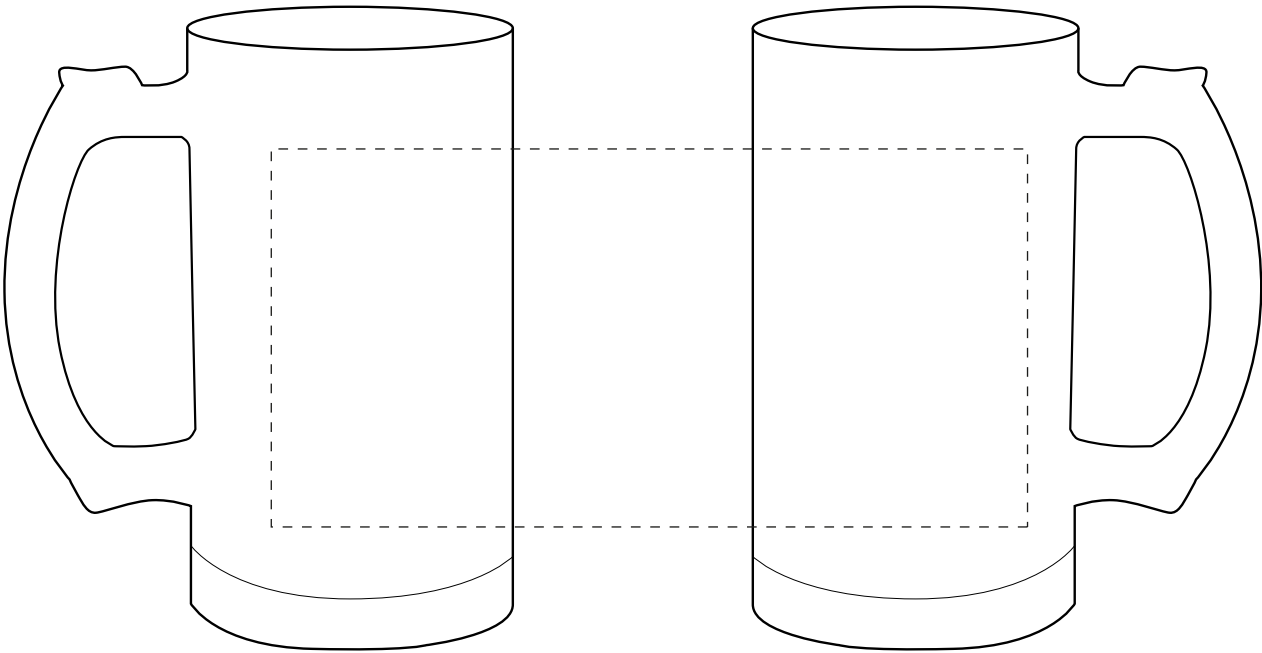
Glass Stein

Design Name	xxxxx	Print Colours	CMYK
Product Colour	Frosted Glass		
Print Process	Dye Sub	No. of Colours	
Artwork Position	Full Wrap	Repeat Order	

Back Stamp		Print Position	
Inside Base Print		Print Colours	
Inner Rim		No. of Colours	
Handle Flash		Additional	
Gilding		Notes	



PLEASE BE AWARE THAT SMALL TEXT AND LOGOS MAY FILL IN WHEN SUBLIMATED ONTO THE MUG



ARTWORK SCALED TO 50%

Please note, that the mug illustration on the lower part, is a rough guideline outlining the position of the design on the mug, and may not be to scale. The colour of the actual product is as per the order details in the top left hand corner of the PDF, the colour of the print shown is a representation only, as colours can display differently on different software and monitors. We reserve the right to make appropriate extra charges for multiple or continual changes/modifications to artwork which result in us incurring further costs for films/screens etc. If you are to print this PDF please remember to print to 100% scale (and NOT 'print to fit') to ensure accurate artwork size.